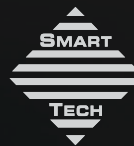


# ScanBright archeo



**SMARTTECH**  
Optical measurement systems

ScanBright archeo 3D scanner - is a complex solution to provide full digitalization of museum objects - beginning from precise documentary with real object texture, to creating virtual museum objects.



ScanBright archeo is the only one 3D scanner in his class, specially created to Professional museum objects digitalization in accordance with **RECOMMENDATIONS OF PLANNING AND REALIZATION DIGITIZE PROJECTS IN MESEUMS** (created by special group of experts for digitize objects in National Institution of Museums and Heritage Preservation). In cooperation with many museum institutions, ScanBright archeo 3D scanner meets the highest requirements of conservation measurements and also provide to create realistic models for visualization or creating precise object copy by 3D printing technology.

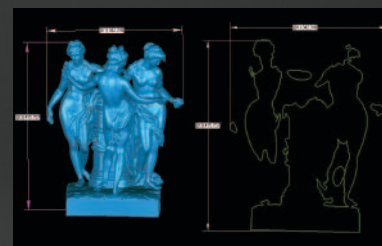
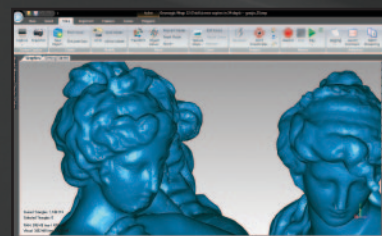
Scan accuracy to 30  $\mu\text{m}$  and high point cloud density (to 650 points/ $\text{mm}^2$ ) provides high precise geometry scanning and enabling to archive, visualize or to guide virtual analysis of object by using results of 3D scanning. The use high-in-class detector with real colour image and highest resolution (18 MPix) gives you the possibility to visualize the smallest changes and visualize every object detail.

**NON-INVASION GUARANTEE.** White light 3D scanning technology, use only white spectrum of light which guarantee to user safety scanning of measuring objects.

**COMFORTABLE USE.** For user comfortable, any 3D scanner is delivered and installed in target place of action with dedicated software and PC work station, allows to data editing. ScanBright archeo 3D scanners are selling with professional transport flight-cases and do not require any calibrations or hardware prepare actions before 3D scanning.

**FULLY SPECIALIZATION FOR MUSEUM OBJECT DIGITIZE.** Over 11 years experience in 3D scanner production and close cooperation with museum institutions, provide us to introduce a lot of additional upgrades and special accessories for heritage preservation measuring. Smarttech offer special numeric control rotate tables to automate measure, advance light markers for automatic point cloud matching at large object (automatic point cloud matching without using stick markers) and function of automatic regular measuring ex. in inspection of continuous environment influence at measured object.

We provide professional service, technical help and complex training about 3D scanning and data editing.



# ScanBright edu



**SMARTTECH**  
Optical measurement systems



## 3D scanners for educational goals - The best offer for education!

- Complex equipment for modern laboratories of fast-prototyping
- 3D scanners,
  - Reverse Engineering software,
  - 3D printers,
  - computers and accessories.

System was deployed at more than 30 universities and technical schools. Close and hard scanner cover with Interior Shock Absorber system (ISA), provide long and safe scanner use. Advance technology allows for surface and texture measuring in the same time. Also, you can scan your object in ULTRA-FAST mode ( 2 seconds of scanning, enables for scanning hard objects like human face, plants etc.).

# SCAN3D multimedia



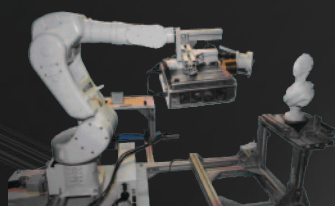
## Scan3D multimedia - scanner created for visualization and multimedia.

Scan3D multimedia enables for generating real models, even very difficult objects with complicated surface in short time and texture scanning in the same time. ULTRA-FAST scanning function ( 2 seconds of scanning) provide for scanning objects like human body, plants, clothes, etc.

You can increase your work efficiency by using Auto-measure option with our numeric auto-rotate table which make scanning simply and fully automate. Whole system can work at common class PC.

Results of 3D scanning are saving in full compatible file formats, which can be open by any popular graphic software (Autodesk 3Ds Max, Blender etc.).

### Additional accessories:



Measuring robot



Automatic rotate table

Technical details	ScanBright archeo	ScanBright edu	SCAN3D multimedia
Technology	Structural White Light	Structural White Light	Structural White Light
Detector resolution [points]	18 Mpix	2, 3, 5 Mpix	3, 5, 10, 18 Mpix
Scanning field [mm <sup>2</sup> ]	150x200 - 1200x1600	150x200 - 1200x1600	150x200 - 1200x1600
Distance between points[mm]	0,04 - 0,40	0,08 - 0,50	0,04 - 0,70
Sampling rate [points/mm <sup>2</sup> ]	9 - 650	1 - 160	1 - 600
Number of points from scan [points]	18 millions	2 - 5 millions	3 - 18 millions
Tripod	+	option	+
Texture measure	+	option	+
Mobile work station	+	option	option



**SMARTTECH**  
Optical measurement systems

ul. Raclawicka 30  
05-092 Łomianki k.Warszawy  
biuro@smarttech.pl

tel.: +48 22 751 19 16  
fax: +48 22 751 52 05  
www.smarttech.pl

**geomagic**<sup>®</sup>

the magic of making it simple™

www.geomagic.com